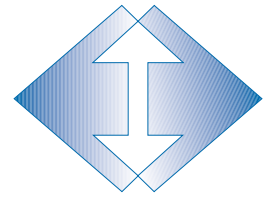


Electric-Monorail-System

*SpeedPorter*<sup>®</sup>



Recommended for Conveyance



## The Innovative Electric-Monorail-System

The EMS vehicle system *SpeedPorter* sets new standards for pallet conveying within your facilities. The consistent implementation of a fast speed and a dynamic vehicle control enables a high conveying performance of up to 450 pallets per hour.

– and this for transport weights up to 1200 Kg!

# *SpeedPorter*<sup>®</sup>

– fast, save and flexible

Compact vehicle dimensions and a sophisticated drive system with two axes enable high acceleration and conveying speeds.



By employing an advanced, contactless current and data transmission technology, the *SpeedPorter* vehicle operates extremely quiet and this for speeds up to 2.5m/s!

In order to adjust to your requirements, the vehicles are designed in such a way that various lifting units can be used.

Thanks to the separate control of two chain conveyors, a combined transport of pallets or containers is possible on one vehicle. In addition, coated transport chains allow a stable, safe and gentle transport.

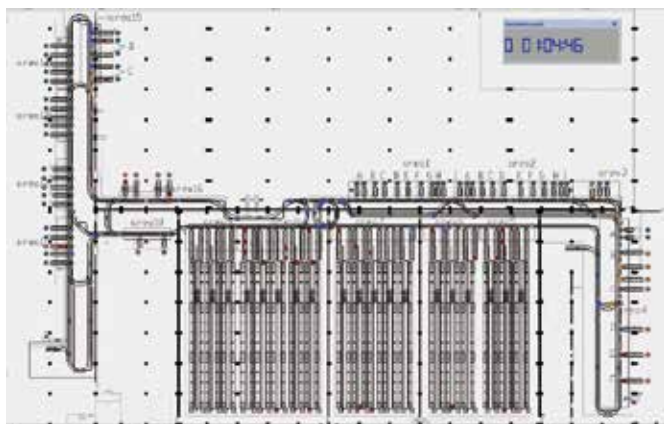
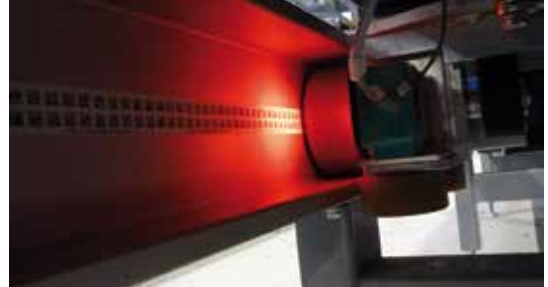
## The capable rail system

The rail system comprising two tracks encloses the rollers of the vehicles almost completely and therefore offers an effective protection against soiling.

The rails made of high-strength anodized aluminium are equipped with continuous mounting slots and, consequently, enable a quick installation.

The core of the rail system is the distribution gate developed by RBS Förderanlagen that ensures, thanks to short changeover times, a performance of 450 vehicles per hour, even at a 1:1 distribution.

Safety facilities, protective railings and the required transitions supplement the complete *SpeedPorter* Electric-Monorail-System.



## Arriving without congestions

In the control system developed by RBS Förderanlagen, all conveying tasks are controlled by the superordinated system and the vehicles are coordinated accordingly.

Avoiding congestions has top priority. Only if the material flow is ensured, a quick *goods-to-man* – service can be achieved.

No need to say that all conveying tasks, vehicle data and loading conditions can be called up in real time.

## Located at the Centre of Europe ...

... RBS Förderanlagen has its headquarters in Gelnhausen near Frankfurt/Main. This is where the conveyor systems are developed, designed and manufactured meeting highest quality standards.

Extensive production shops and a state-of-the-art manufacturing process are the basis for an economic production.

In close contact with our customers, we develop customized systems solutions for the optimum in-company material flow from pallet conveyors over ceiling conveyors up to piece goods transport.



## Full service for utmost customer satisfaction

As a family-run company, we have committed ourselves to solidity, continuity and a comprehensive customer service since 1973.

For quality reasons, the installation and start-up of the systems will be carried out almost exclusively by our own personnel.

Our competent and reliable staff is also available for the subsequent maintenance and potential modifications.

This is how we ensure that you will be satisfied with our service in the long term.



## RBS Förderanlagen GmbH

Leipzigerstraße 68

63571 Gelnhausen/Germany

Phone ++49(0)60 51/23 62

Fax ++49(0)60 51/1 43 89

e-mail [info@rbs-foerderanlagen.de](mailto:info@rbs-foerderanlagen.de)

internet [www.rbs-foerderanlagen.de](http://www.rbs-foerderanlagen.de)

